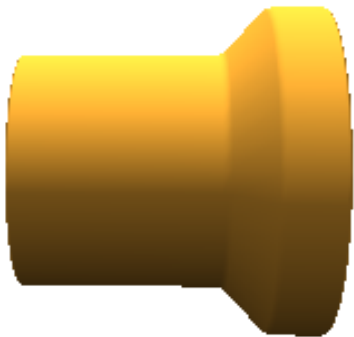
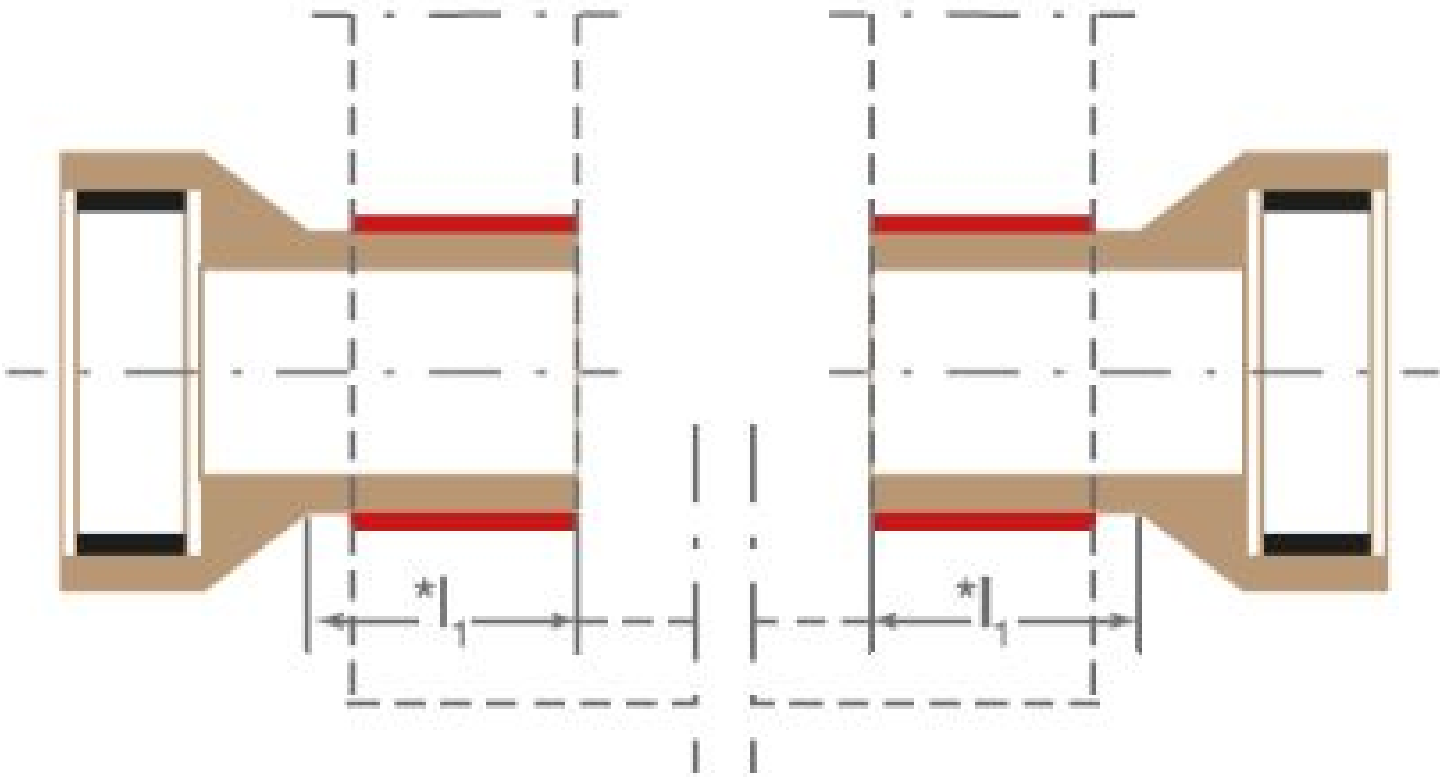


KERA.BASE
CONNECTORS GE



TECHNICAL DRAWING



NOMINAL SIZE DN 350

- 150
- 200
- 250
- 300
- 350
- 400
- 500
- 600

JOINT

- K
- L

JOINT SYSTEM

- C
- F

WEIGHT	TKL
37 kg/piece	160

BRIEF DESCRIPTION

Articulated pieces are used for producing connections to structures such as shafts or gullies. There is a distinction between articulated pieces for the inlet (GZ) and the outlet (GA) and for installation in a building (GE). Installation pieces (GE) are completely or partially unglazed, thus guaranteeing a tight integration into the shaft wall.

Vitrified clay pipes and fittings are standardised in EN 295-1. Supplementary Requirements defines the certification program ZP WN 295.

All measurements - especially when connecting to third-party products - must be checked and depend on the specifications of EN 295 and on the certification program ZP WN 295. Subject to technical changes.

